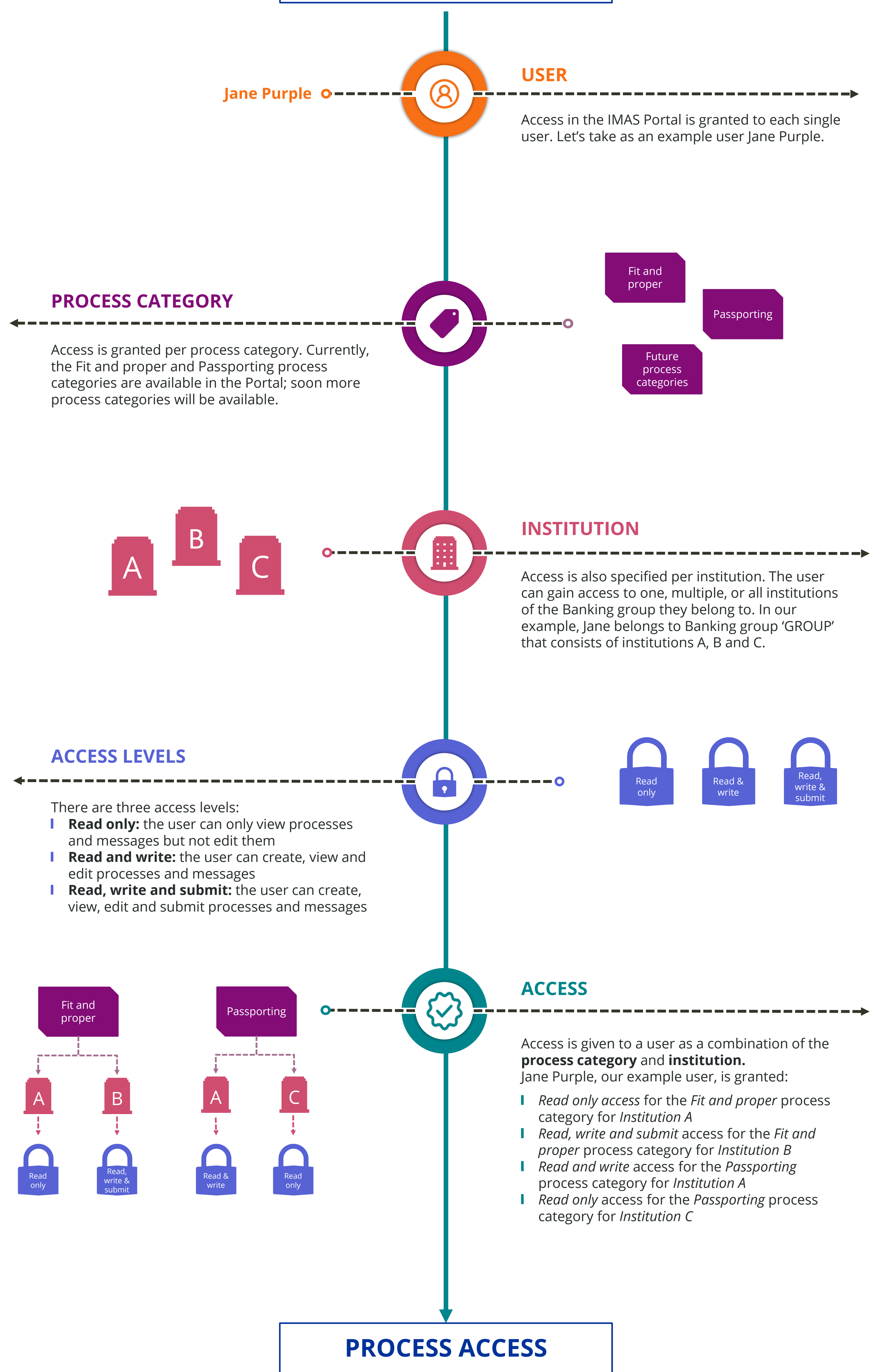


Access to processes in the IMAS Portal is a combination of the user's access rights and the attributes of the process. We first explain how users are granted access, what 'attributes' characterize a process and how these are combined, resulting in process access.

## GRANTING USER ACCESS



Each process belongs to a specific process category and refers to a single institution. Based on these 2 attributes and the access rights of the user, the access to the process is defined. Continuing the example of our user Jane Purple, we can see what kind of access she would have for different processes, based on her access described above.

	Process category	Institution	Jane Purple
Process X	Fit and proper	for Institution A	Read only
Process Y	Fit and proper	for Institution A	Read only
Process Z	Fit and proper	for Institution C	No access
Process Q	Passporting	for Institution A	Read and write

Delegated access administrators (DAAs) grant, revoke and manage access on a Group level

Granting access to a user to a single process is not possible.